

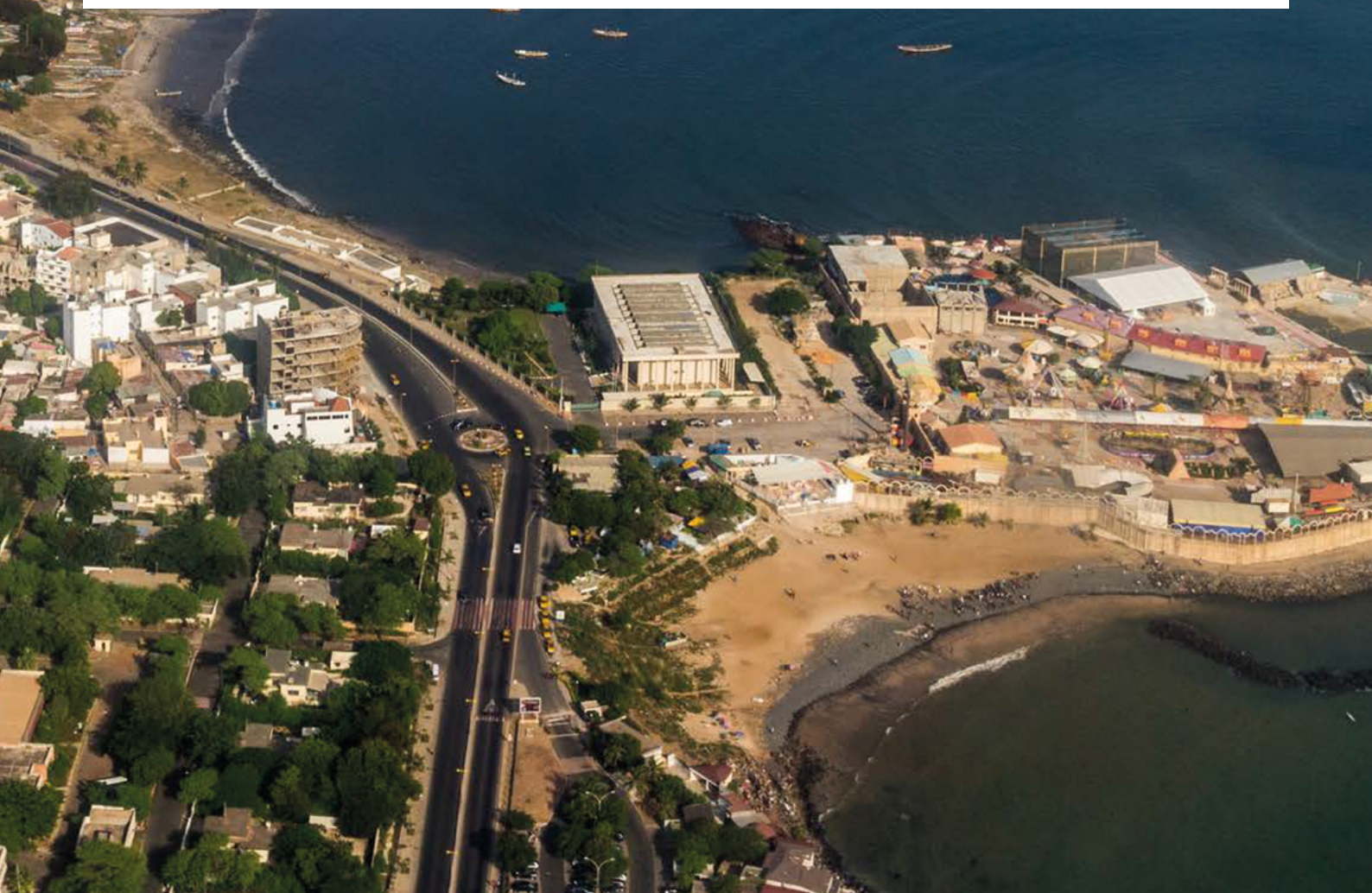
Helvetia Worldwide

helvetia.fr

Africa. Marine Insurance.

 Helvetia.

simple. clear. helvetia 
Your Swiss Insurer



Helvetia France.

Business risk insurer specialist.



over 510 employees



558 M€ turnover in 2024



Dates.

1921

Helvetia enters the French non-life insurance market

1922

Helvetia focuses in marine insurance

2003

Acquisition of two marine insurance portfolios (British & Foreign; RSA)

2009

Acquisition of CEAT. Motor damage insurance portfolio €30M in premiums / 40 employees

2012

Acquisition of the French portfolio from Groupama Transport €140M in premiums / 225 employees

2016

Fine Art

2017

Construction

2018

London & Dakar Engineering

2019

Helvetia becomes a member of the LRA Pool (La Réunion Aérienne/aviation risks) and LRS Pools (La Réunion Spatiale/space risks) - Property Damage

2020

Corporate Liability Insurance

2021

Motor fleet

2024

Creation of the International Network Division

10 regional offices

in mainland France, in the Overseas Territories (Réunion & Nouméa), and in Africa.



13 lines of business

Shipowner
Construction
Property Damage
Motor fleet
Inland Waterways
Cargo
Fine art

Fishing
Boating/yachting
Port Operations
Corporate Liability
Engineering
Freight Forwarder Liability

Helvetia France, your partner, Marine & transport insurance specialist.

Over 40 years of involvement in Africa.



A dedicated team and coordination:

- Representative office in the CIMA zone, based in Dakar;
- Key contacts in all our offices in France;
- Insurance partners network (brokers, insurance and reinsurance companies) across the entire continent;
- Financial capacity to support local companies for major transport risks;
- Active participation in professional lobbying groups;
- Experience sharing, expertise, know-how and knowledge.

Your key contacts

General Representative based in Dakar

- **Abdoulaye KAZANOE**
abdoulaye.kanazoe@helvetia.fr

Africa Coordination

- **Aline SAMAR**
aline.samar@helvetia.fr
- **Leslie GUILLOU**
leslie.guillou@helvetia.fr



Helvetia France's lines of business in Africa.



Cargo insurance

Cargo damage insurance, during transportation, stock and transit.

Exclusions:

- Rice;
- Coal.

Our targets:

- Agribusiness;
- Trading, Commodities, Import/Export companies;
- Retail sector;
- Construction and public works companies;
- Engineering industries;
- Pharmaceutical industries;
- Energy sector;
- Transport and logistics, telecom;
- Manufacturing/production of construction machinery or mechanical industries.



Freight forwarder liability insurance

Freight forwarder liability insurance for transport professionals, towards their clients, third parties, and employees.

Exclusion:

- Pure local operators.

Our targets:

On behalf of the subsidiaries of our French clients in Africa.

- International transport organizer and operator;
- Freight forwarders;
- Forwarding agents.

Helvetia France's lines of business in Africa.



Fine Art.

All-risk coverage (transport + exhibition):

- All risks;
- Storage;
- Transportation
- Worldwide coverage (including acts of terrorism and natural disasters).

Our targets:

- Museums / art galleries;
- Private collections;
- Corporate collections;
- Foundations / cultural institutions;
- Temporary exhibitions / trade shows / fairs.



Shipowners, Fishing, and Ports

Damage and liability insurance:

- Pleasure craft / large pleasure craft / yachts;
- Hull & Machinery;
- Fishing boats;
- Ports and ports terminal liability;
- Shipyard liability.

Exclusions:

- Singleton ;
- IACS classified vessels over 20 years old;
- Charterer liability.

Our targets :

- Vessel fleets with international trading;
- Offshore support vessels;
- Operators of private port terminals;
- Tugboats, patrol boats, medium-sized public ports and port terminals, stevedores, agents, repair and construction shipyards, subject to expert evaluations.

Information required for risk assessment

Cargo insurance:

- Prospect or client name and address;
- Type of cargo, transportation modes;
- Territoriality: departure/destination;
- Last five years statistics;
- Required coverage;
- Required setup (market, duration);
- Intermediaries details and licencies;
- Brokerage fees, reinsurance commissions.

Shipowners, Fishing, and Ports terminals:

- Turnover from the previous year, number of employees;
- Shipowner's experience;
- Insured value (with details per unit);
- Crew members and qualifications ;
- Vessels: age, type, shipyard, materials, size, tonnage, classification, flag, navigation zones ;
- Engines and maintenance: number, brand, power;
- Type of cargo;
- Risk history: previous insurer, reason for termination, last 5 years claims history.

Freight forwarder liability insurance:

- Identities: of the applicant, beneficiary, and intermediary;
- Turnover from the previous year / last 4 years significant variations;
- Number of employees + breakdown by category, including drivers;
- Number of vehicle registration certificates;
- Required coverage: contractual liability;
- Covered activities: valet and rental services, transport operator, handling/lifting, logistics;
- Territoriality;
- Risk history + claims history for the last 4 years.

Fine art:

- Identities: of the applicant, beneficiary, and intermediary;
- Description of the risk location: address, type of place, form of residence, environment, frequency of presence, and any other description of the location;
- Protection means: Theft protection system, Fire detection system, Access door security, EN 1143-1 certified safe;
- Insured perimeter: art collections, art galleries, exhibitions;
- Required coverage: temporary, annual, all-risk, others;
- Insured value;
- Risk / claims history.

Abdoulaye Kanazoé
General Representative

Helvetia Assurances
Reinsurance Representative Office
BP 50 555 - 12 Boulevard Djily Mbaye,
Azur Building 15, 2nd floor, Dakar-Senegal
T +221 33 829 64 07, M +221 77 092 52 81
abdoulaye.kanazoe@helvetia.fr, www.helvetia.fr

Head Office
25 quai Lamandé
76600 Le Havre
+33 (0)2 32 92 92 92
www.helvetia.fr

